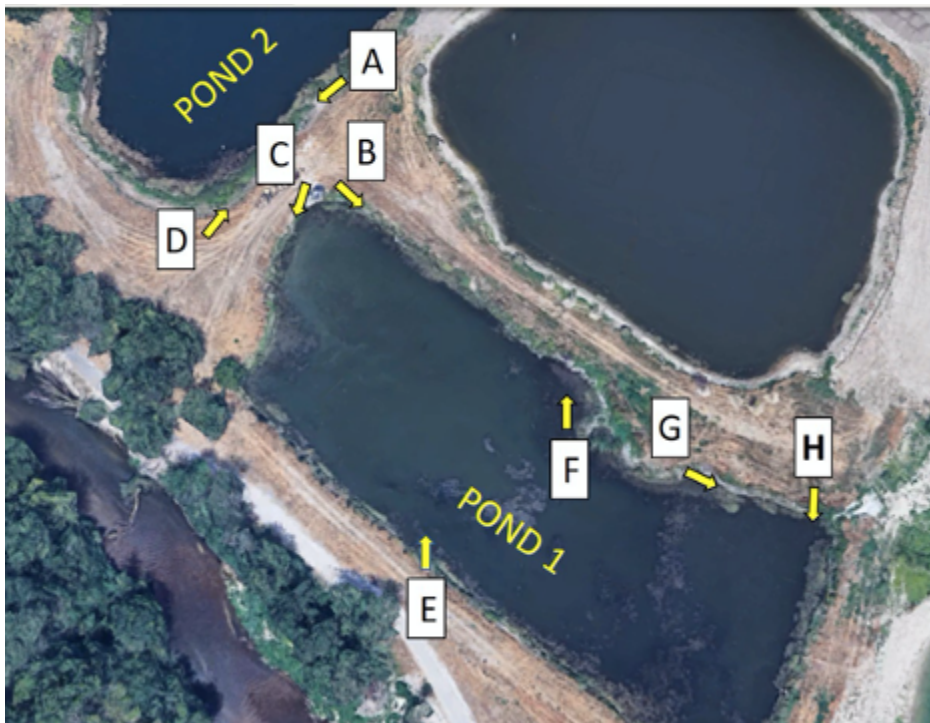


Photo Points at Wood's Park in Eagle  
Project led by BREN  
Created and Photographed by Madison Skinner  
Original Photo Points and Outline by Jeremiah Heitke

Photo Points Intro:



Map showing general location of Wood's Park



Map showing the location and direction of photo points.

**Location A. Eastern Shore of POND 2 facing the Boise River. Camera angle = 216°.**



March 2019



November 2019



Cont. growth of willows

April 2020



Large inc. in willow size

September 2020



July 2021

Cont. large Willow growth



**Location B. Northwestern corner of POND 1. Camera angle = 114°**



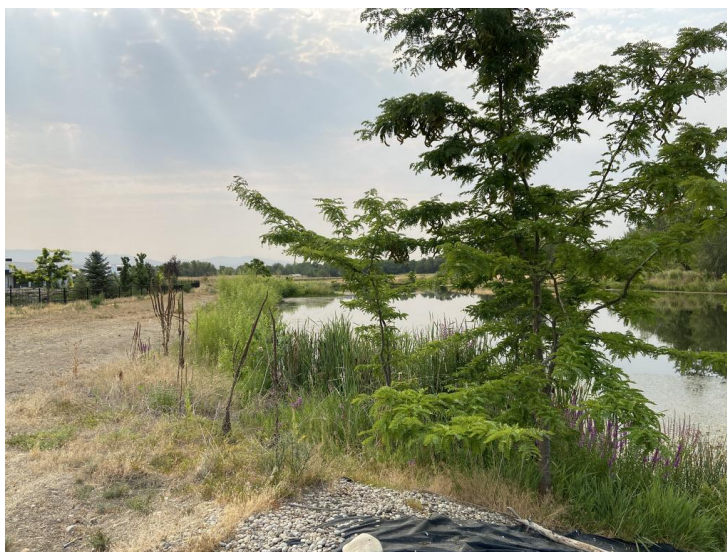
March 2019

November 2019



April 2020

September 2020



July 2021



**Location C. Northwestern corner of POND 1 looking toward Boise River.**  
**Camera angle = 167°**



March 2019



November 2019



April 2020



September 2020



July 2021



**Location D. Southeastern corner of POND 2. Camera angle = 357°**



March 2019



November 2019



April 2020



September 2020



July 2021

Large established banks of willows



**Location E. Overview of POND 1 taken from southern shore. Camera angle = 338°**



March 2019



November 2019



April 2020



September 2020



July 2021



**Location F. Northern shore of POND 1 taken from a point in the shoreline.**

**Camera angle = 325°**



March 2019



November 2019



April 2020



September 2020



July 2021



**Location G. Northeastern corner of POND 1. Camera angle = 45°**



March 2019



November 2019



April 2020



September 2020



July 2021



**Location H. Northeastern corner of POND 1 facing the Boise River.**

**Camera angle = 144°**



March 2019



November 2019



April 2020



September 2020



July 2021